

Heartwood Charter School

Agenda for the special meeting of the Heartwood Charter School Board of Directors

Call in location: 225 Tamalpais Rd, Fairfax, CA 94930

Call in location: 55 Fire Rd, Woodacre, CA 94973

The meeting may be joined by phone: (US)[+1 717-559-2871](tel:+17175592871) PIN: 130 298 316#

Wednesday October 20, 2021

10:00 AM Public Session

Call to Order

- I. Roll Call
- II. Regular Meeting
 - A. Agenda Adjustments and Approval
- III. Public and Community Input
- IV. Action Items
 - A. The Board will consider a revision to the School's Covid Safety Plan to update masking requirements based on recent decisions by public health departments, and approve, defer, or agree to study further.
- V. Dates and Future Agenda Items

COVID-19 Safety Plan (CSP) for Heartwood Charter School Safe Return to In-Person Instruction and Continuity of Services (SRIPICS)

Date: Updated October 18, 2021

This CSP is designed to control and prevent exposures to the Covid-19 virus at the **Heartwood Charter School** ("School") **Bothin Resource Center** ("Center").

This document consists of the following components:

Part 1: COVID-19 Safety Plan Specific Measures and Procedures

Part 2: Cal OHSA COVID-19 Protection Plan (CPP)

Attachment 1: Center Cleaning and Safety Protocols and Practices

Attachment 2: Faculty and Staff Daily Health Screening Form

Attachment 3: Student Daily Health Screening Form

Attachment 4: Scenarios and Template Communications

Attachment 6, Actions for Suspected or Confirmed Case

Attachment 7: Template Communications

Appendix A: Form for Identification of COVID-19 hazards

Appendix B: Form for Periodic Inspections

Appendix C: Form for Investigating COVID-19 cases

Appendix D: Form for COVID-19 Training Roster

Appendix E: MCOE Decision Tree

Appendix F: References

Part 1: COVID-19 Safety Plan Specific Measures and Procedures

Authority and Responsibility

Stephanie Felton-Priestner, School Executive Director, has overall authority and responsibility for implementing the provisions of this CSP. In addition, all faculty and staff and parents are responsible for implementing the CSP in their assigned work areas, and for using safe work practices, following all directives, policies and procedures, and assisting in maintaining a safe work environment. All staff is responsible for ensuring staff, students and parents receive answers to questions about the program in a language they understand.

Points of Contact

Stephanie Felton-Priestner	Executive Director	stephanie@heartwoodcharterschool.org	415-488-9572
Jeremiah Watterson	Education Specialist	jeremiah@heartwoodcharterschool.org	

Visitors, Volunteers and Vendors

Non-essential visitors, including parent volunteers will be limited. Essential workers will be required to adhere to all health and safety guidelines. Any substitutes, contractors, visitors or volunteers working directly with students should be fully vaccinated or must be tested weekly. Visitors must follow masking and distancing requirements. The visitor must pass the health screening and be always masked when near students.

School Entry and Exit

Every parent/caregiver will monitor children daily and perform a health screening before arrival to an open resource center. A written or on-line report is not required, but symptomatic students must remain home and the symptoms must be reported to the school.

Staff and faculty will also self-screen daily and shall remain home when symptomatic. Staff will be encouraged to obtain a COVID test if symptoms persist. (Please see Health Screenings, below as well as Attachment #2 Faculty Health Screening and Attachment #3 Student Health Screening)

On-campus gatherings such as school assemblies and festivals, as well as business meetings, may proceed with masking required when indoors or in close proximity. Indoor gatherings of more than 100 people are prohibited at this time.

Face Coverings and PPE

Heartwood Charter School will enforce the Public Health face covering requirements. All staff, students, visitors and volunteers will wear face coverings as per health and safety guidelines. Face coverings shall be minimum 3 ply, well fitting, and without exhalation valves.

Students in grades TK-8 will wear a face covering at all times when inside, and be supported with instruction in proper use, unless there is a medical or behavioral contraindication. An exemption to masking requirements can only be made with a doctor certification. See attached form. Special attention will be paid to finding times in the day and isolated places on campus where children can safely take a break from their face coverings.

Lunch and breaks will be conducted outdoors whenever possible.

Masks may be removed outdoors ~~if a distance of 10 feet is maintained.~~

Extra face coverings will be made available to those who need them.

Anyone who refuses to wear face masks in accordance with the above requirements will be refused access to the School site, or if already admitted, will be sent to the isolation area and the parent called for pick-up.

Health Screenings

All School staff and faculty will complete the daily screening at home before arriving at the Center in accordance with Attachment 2, Faculty and Staff Daily Health Screening. Symptomatic staff will report the symptoms to the school and shall remain home while symptoms persist. Staff will be encouraged to test when symptomatic. See **Attachment 2, Faculty and Staff Daily Health Screening** for screening protocols. If a staff member does not pass the health screening, they will educate students remotely until they are able to pass the Health Screening and Return to Work Criteria.

Routine testing plan for staff is shown in the table below. Heartwood Charter School will cooperate with Marin

County Public Health to support testing strategies for staff and students, as appropriate, at our Marin Resource Center.

All parents or guardians will complete the daily screening for all students for each school day the student will be attending the Center. Symptomatic students will report the symptoms to the school and shall remain home while symptoms persist. Parents will be encouraged to obtain a Covid test for students if symptoms develop. See **Attachment 3, Student Daily Health Screening** for screening protocols. If students are sick and cannot attend school in person, the student will be provided materials or support for remote learning until they are able to pass the Health Screening and return to class.

If students are found to be symptomatic or ill during the day, the protocols described in **Attachment 1, School Cleaning and Safety Protocols and Practices** will be followed. First, staff and students must check for symptoms before arriving at the Center. If staff or students are found to be ill, they will notify the School. Suspected exposure will be reported to Marin Public Health. If staff or students are found to be ill during the day, they will go to the designated Isolation area at the Center and wait for transportation.

Confirmed cases of Covid-19 will be reported to the Marin County Public Health and the communication template will be followed as described in **Attachment 4, Scenarios and Template Communications**.

Testing Protocol

Since Heartwood has previously reopened at a time of lower risk level, Cal/OSHA minimum testing requirements apply.

Condition of Individual	Testing for Students	Testing for Staff
Asymptomatic	No requirement for asymptomatic testing provided there is no suspected or known exposure.	Asymptomatic testing every two months for vaccinated staff, and every week for unvaccinated staff. Testing at no charge and during work hours will be offered.
Symptomatic	Students shall immediately vacate school or refrain from accessing Center. Students shall obtain a test. If test result is negative, student may return to Center. If result is positive, student must quarantine for 14 days and may return after 24 hours after abatement of symptoms.	Staff shall obtain testing after identifying symptoms. Staff shall obtain testing after suspected exposure to symptomatic individual. Tests shall be obtained in accordance with the recommended time period. Testing at no charge and during work hours will be offered.
Response to Suspected Exposure	Students shall obtain a test and negative result before returning to Center.	Staff shall obtain testing after identified exposure to symptomatic individual within staff or a student cohort, or outside of work.

Outbreak	<p>Cohorts of students exposed to Outbreak cases will be excluded from in-person instruction and shall obtain a test immediately and again after 10 days.</p> <p>Return to school criteria will apply after 14 days with no new cases at the Center.</p>	<p>Staff exposed to Outbreak cases will be excluded from Center attendance and shall obtain a test after 5 days. The student shall obtain another test after 10 days. Return to school criteria will apply after 14 days with no new cases at the Center.</p>
----------	--	---

Physical Distancing

Physical distancing is not required in accordance with current CDC and CDPH recommendations. Distancing is required under the following conditions:

- ~~Distancing is required If unmasked outdoors, and an effort will be made to maintain 10 feet between individuals.~~
- Distancing may be implemented if an Outbreak occurs (3 or more cases in Heartwood Charter School). During an Outbreak, every effort will be made to **maintain physical distancing of six feet** between staff and students, as well as between students. No less than five feet of distance will be permitted at any time.

Under these conditions, staff will follow physical distancing and face covering protocols at all times.

Heartwood Charter School may use the natural outdoor spaces at the Bothin Resource Center (designed as a youth camp) as outdoor classrooms, or may convene indoors with masking requirements.

Plastic barriers, clear screens and privacy boards will not be used in outdoor or indoor classrooms. For indoor spaces under outbreak conditions, spaces may be reconfigured to maximize physical distancing and minimize occupancy. We will continue to update our spaces in response to updated data and research.

Lunch and **recess** will be conducted in outdoor or indoor areas.

On-campus gatherings such as school assemblies, festivals and meetings will proceed with masking required for indoor ~~or large outdoor~~ gatherings. ~~Masking is not required for outdoor gatherings. Distancing may be employed during larger gatherings.~~ In person gatherings will be avoided during any Outbreak periods.

Healthy Hygiene Practices

Faculty and staff Hygiene and cleaning practices are described in **Attachment 1, School Cleaning and Safety Protocols and Practices**. All classrooms are equipped with outdoor handwashing stations, with appropriate supplies for regular handwashing. The following minimum schedule of handwashing for students and faculty will include upon arrival to campus, before eating and after recess. Teachers and students will be permitted to use alcohol-based hand sanitizer in lieu of soap and water if an activity occurs away from a wash station. Frequently used surfaces will be regularly disinfected.

Handling Exposures

If students are found to be symptomatic or ill during the day, the protocols described in **Attachment 1, School Cleaning and Safety Protocols and Practices** will be followed. First, staff and students must check for symptoms before arriving at the Center. If staff or students are found to be ill, they will notify the School.

Suspected exposure will be reported to Marin Public Health.

Faculty and staff will self-monitor throughout the day and will monitor students. If staff or students are found to be ill during the day, they will immediately go to the designated Isolation Area at the Center and wait for transportation. Staff will be provided PPE if it is required to assist the ill students. Any exposed areas or rooms will be disinfected immediately.

An Isolation Area has been created that allows students to comfortably isolate until picked up by a family member or emergency contact. The isolation area will be setup in an unused, protected area. This private area is away from the classrooms and frequented outdoor paths, with its own bathroom facility. Parents will be able to pick up their child without coming in contact with other students or staff.

Provide guidance to parent about testing, quarantining and return to school criteria.

After an Exposure

Marin County Public Health will be notified immediately of any cases of COVID19 in the Heartwood staff or student body and the Marin County Public Health Protocols & Communication Template will be followed. Parents are instructed to keep a record of contacts so that the exposure may be traced.

Designated and trained Contact Tracing staff will gather the appropriate and available contact data available from school and parent records. Contacts will be recorded and reported per LDH Guidelines.

Testing will be performed in accordance with **Testing Protocol**, above.

Staff under isolation or quarantine will be allowed to work remotely or have a substitute fill in for their duties.

Students under isolation or quarantine will have access to distance learning resources.

For a suspected or confirmed case of COVID-19, the actions in Attachment 6, Actions for Suspected or Confirmed Case shall be followed. For a symptomatic individual, the individual will be sent home and advised to test.

Quarantine

For an unvaccinated close contact where both parties are masked, the individual may undergo a modified 10-day quarantine **while continuing to attend school** if they:

- Are asymptomatic; **AND**
- Continue to appropriately mask, as required; **AND**
- Undergo at least twice weekly testing during the 10-day quarantine; **AND**
- Continue to quarantine for all extracurricular activities at school, including sports, and activities within the community setting.

For unvaccinated close contact who were not masked and remain asymptomatic may discontinue self-quarantine under the following conditions:

- After day 10 from date of last exposure without testing; **OR**
- After day 7 from date of last exposure if diagnostic specimen is collected after Day 5 and test is negative

If any symptoms develop during this 14-day period, the exposed person must immediately isolate, get tested and contact their healthcare provider with any questions regarding their care.

Students and staff may return to the Center when the following CDPH criteria has been met:

- At least 24 hours has passed since resolution of fever (without medications), **AND**
- Other symptoms have improved, **AND**
- They have a negative test for SARS-CoV-2, **OR** a healthcare provider has provided documentation that the symptoms are typical of their underlying chronic condition (e.g., allergies or asthma) **OR** a healthcare provider has confirmed an alternative named diagnosis (e.g., Streptococcal pharyngitis, Coxsackie virus), **OR** at least 10 days have passed since symptom onset.

Outbreak response: In the case of 3 or more cases in a 14-day period ("Outbreak"), all staff will be tested under Outbreak conditions. The community will be notified, a staff member will be assigned to coordinate, and contact tracing will be recorded. Cleaning and disinfection will be arranged and excluded groups will be identified and notified. Physical distancing will be implemented. Any required closure and reopening will be conferred with the LHD. Notify the community and implement distance learning in the event of school closure.

Major Outbreak response: In the case of 20 or more cases in a 14-day period ("Major Outbreak"), all staff will be tested under Outbreak conditions. The community will be notified, a staff member will be assigned to coordinate, and contact tracing will be recorded. Cleaning and disinfection will be arranged and excluded groups will be identified and notified. Any required closure and reopening will be conferred with the LHD. Notify the community and implement distance learning in the event of school closure. Return to Center criteria will apply after 14-day quarantine.

Communications Plans

Various conditions and exposure events may need to be communicated to the community in accordance with CDPH guidelines. Sample communications are shown in **Attachment 8, Template Communications**.

Staff and Family Training

Heartwood Charter School will train Center staff on this plan update and will conduct refresher trainings every two months and after significant revisions. Signage about the proper use of face-coverings will be displayed in classrooms and in common areas on campus. Parents will receive written communications regarding proper use and care for face coverings.

Engineering Controls

Clear screens and privacy boards will not be used in classrooms. Under Outbreak conditions, we will utilize space reconfiguration, physical distancing, and occupancy minimization. In special cases where proximity seems desirable, we may use clear screens to maintain safety. We will continue to update our spaces in response to updated guidance.

Consultation on Plan Development

The Heartwood Charter School ~~SCRIPICS-Covid Safety Plan~~ was completed with input from staff, parents and the board members on ~~August —, October 6, 2021~~2020. The plan was posted on our website and shared with parents. The School Center was reopened for limited in-person instruction in October and November 2020. The ~~plan-Plan was has been~~ updated since that time and has been posted on our website.

Part 2: Cal OSHA COVID-19 Prevention Plan (CPP)

Identification and Evaluation of COVID-19 Hazards

The following Screening and Hazard Identification Procedures will be implemented with the following procedures:

- **Part 1, COVID-19 Safety Plan Specific Procedures**, which outlines prevention and control measures practiced ensuring safety at the site.
- Evaluate students' and employees' potential exposures to all persons at, or who may enter, our workplace.
- Conduct workplace-specific evaluations using the **Appendix A: Form for Screening and Identification of COVID-19 Hazards**.
- Review applicable orders and general and industry-specific guidance from the State of California, Cal/OSHA, and the local health department related to COVID-19 hazards and prevention.
- Periodically reevaluate existing COVID-19 prevention controls in our workplace and the need for different or additional controls.
- Conduct periodic inspections using the **Appendix B: COVID-19 Inspections form** as needed to identify unhealthy conditions, work practices, and work procedures related to COVID-19 and to ensure compliance with our COVID-19 policies and procedures.

Specific Control Measures

We will implement the following in our workplace:

- Specific control measures as identified in **Part 1, COVID-19 Safety Plan Specific Procedures**, above in this document.
- Conduct periodic workplace-specific evaluations using the **Appendix A: Identification of COVID-19 Hazards** form.
- Evaluate employees' potential workplace exposures to all persons at, or who may enter, our workplace.
- Review applicable orders and general and industry-specific guidance from the State of California, Cal/OSHA, and the local health department related to COVID-19 hazards and prevention.
- Evaluate existing COVID-19 prevention controls in our workplace and the need for different or additional controls.
- Conduct periodic inspections using the **Appendix B: COVID-19 Inspections form** as needed to identify unhealthy conditions, work practices, and work procedures related to COVID-19 and to ensure compliance with our COVID-19 policies and procedures.

Employee participation

Employees and their authorized employees' representatives are encouraged to participate in the identification and evaluation of COVID-19 hazards by observation and reporting to the Point of Contact.

Employee screening

We screen our employees by:

- Self-screening before and during each workday in accordance with CDPH standards.
- Self- and peer-monitoring throughout the workday.

- Failure of self-screening or development of symptoms will result in employee staying or returning home.

Control of COVID-19 Hazards

Physical Distancing

Physical distancing is not required regardless of vaccination status with the following exceptions:

- School will evaluate whether physical distancing is required during an outbreak (3 or more cases in an exposed group of employees).
- School will implement physical distancing and barriers (in close indoor situations) during a major outbreak (20 or more cases in an exposed group of employees)

In addition, during outbreaks, if distancing is deemed to be required, the following physical distancing protocols will be followed:

- All staff will stay 6 feet apart and 6 feet from students, or as far apart as possible.
- Plan occupancy so that there will be sufficient space to allow 6-foot distancing.
- The only exception to 6 feet distancing standard is to assist a sick student when needed.
- Staggered arrival and departure times.
- Restricted travel routes and marked waiting areas.
- Closure of hallways and unnecessary areas.

Face Coverings

Face coverings are required in all indoor areas. We provide clean, undamaged face coverings and ensure they are properly worn by employees over the nose and mouth when indoors, ~~and when outdoors and less than six feet away from another person~~, including non-employees, and where required by orders from the California Department of Public Health (CDPH) or local health department. -Face coverings are not required outdoors.

The following are exceptions to the use of face coverings in our workplace:

- When an employee is alone in a room or vehicle.
- While eating and drinking at the workplace, provided employees are at least six feet apart and outside air supply to the area, if indoors, has been maximized to the extent possible.
- Employees who cannot wear face coverings due to a medical or mental health condition or disability, or who are hearing-impaired or communicating with a hearing-impaired person. Alternatives will be considered on a case-by-case basis.
- Any employee not wearing a mask will immediately seek a replacement.
- When outdoors.

Any employee not wearing a face covering, face shield with a drape or other effective alternative, or respiratory protection, for any reason, shall be at least six feet apart from all other persons until a mask can be provided.

Vaccines

Face coverings are required in all indoor areas, regardless of vaccine status. Exceptions are noted above in Face Coverings. At this time, vaccinations are not allowable substitutes for face masks in indoor or enclosed areas.

Testing

The school will offer testing at no cost to employees, and will be allowed to obtain a test during paid time, under the following conditions:

- Unvaccinated employee who is symptomatic
- Unvaccinated employee who has been exposed
- Unvaccinated employees after an outbreak at school
- Vaccinated employees after exposure and becoming symptomatic
- All employees after an outbreak at school

Engineering controls

At this time School **does not utilize engineering controls**, such as barriers, but instead adheres to masking and natural ventilation or outdoor settings. If outdoor air quality is not sufficient, the Center will be closed for the duration of poor air quality.

Cleaning and disinfecting

We implement the following cleaning and disinfection measures for frequently touched surfaces:

- All class, bathroom and work surfaces are cleaned and disinfected daily.
- Cleaning supplies are monitored and reordered as necessary.
- Information regarding COVID-19 is posted.

Shared tools, equipment and personal protective equipment (PPE)

PPE must not be shared, e.g., gloves, goggles, and face masks or shields.

Frequently used items will be regularly disinfected.

Hand sanitizing

In order to implement effective hand sanitizing procedures, we will follow the procedures in Attachment 1, Center Cleaning and Safety Protocols. The protocols include the following:

- Separate handwashing facilities for each classroom.
- Handwashing schedules and procedures.
- Providing an effective hand sanitizer, and prohibit hand sanitizers that contain methanol (i.e. methyl alcohol).
- Encouraging handwashing for at least 20 seconds each time.

Personal protective equipment (PPE) used to control employees' exposure to COVID-19

Masks are required for indoor occupancy and will be provided if a suitable mask is not being worn by any staff or students. We evaluate the need for PPE (such as gloves, goggles, and face shields) as required by CCR Title 8, section 3380, and provide such PPE as needed.

We evaluate the need for respiratory protection in accordance with CCR Title 8 section 5144 if an outbreak occurs.

Outbreaks

Additional protective measures will be implemented in the case of an Outbreak or Major Outbreak:

- Physical distancing will be implemented in addition to masking requirements (see **Physical Distancing**, above):
- Testing will be encouraged for all employees.
- Use of barriers will be evaluated.
- Possible closure of Center for duration of Major Outbreak.

Correction of COVID-19 Hazards

Unsafe or unhealthy work conditions, practices or procedures will be documented on the **Appendix B: Form for periodic COVID-19 Inspections**, and corrected in a timely manner based on the severity of the hazards, as follows:

- The severity of the hazard will be assessed, and correction time frames will be assigned accordingly.
- Individuals will be identified as being responsible for timely correction.
- Follow-up measures will be taken to ensure timely correction.

Investigating and Responding to COVID-19 Cases

This will be accomplished by using the **Appendix C: Form for Investigating COVID-19 Cases**.

Employees who had potential COVID-19 exposure in our workplace will be:

- Offered opportunity to obtain COVID-19 testing at no cost during their working hours.
- The information on benefits described in Training and Instruction, and Exclusion of COVID-19 Cases, below, will be provided to them.

System for Communicating

Our goal is to ensure that we have effective two-way communication with our employees, in a form they can readily understand, and that it includes the following information:

- Employees should report any symptomatic staff or students to the Points of Contact.
- Employees may report symptoms and hazards without fear of reprisal.
- Our procedures or policies for accommodating employees with medical or other conditions that put them at increased risk of severe COVID-19 illness.
- Sources for COVID-19 testing.
- In the event we are required to provide testing because of a workplace exposure or outbreak, we will communicate the plan for providing testing and inform affected employees of the reason for the testing and the possible consequences of a positive test.
- Information about COVID-19 hazards employees (including other employers and individuals in contact with our workplace) may be exposed to, what is being done to control those hazards, and our COVID-19 policies and procedures.

Training and Instruction

We will provide effective training and instruction that includes:

- Our COVID-19 policies and procedures to protect employees from COVID-19 hazards.
- Information regarding COVID-19-related benefits to which the employee may be entitled under applicable federal, state, or local laws.
- The fact that:
 - COVID-19 is an infectious disease that can be spread through the air.
 - COVID-19 may be transmitted when a person touches a contaminated object and then touches their eyes, nose, or mouth.
 - An infectious person may have no symptoms.
- Methods of physical distancing.
- The importance of frequent hand washing with soap and water for at least 20 seconds and using hand sanitizer when employees do not have immediate access to a sink or hand washing facility, and that hand sanitizer does not work if the hands are soiled.
- Proper use of face coverings and the fact that face coverings are not respiratory protective equipment - face coverings are intended to primarily protect other individuals from the wearer of the face covering.
- COVID-19 symptoms, and the importance of obtaining a COVID-19 test and not coming to work if the employee has COVID-19 symptoms.

Appendix D: COVID-19 Training Roster will be used to document this training.

Exclusion of COVID-19 Cases

Where we have a COVID-19 case in our workplace, we will limit transmission by:

- Ensuring that COVID-19 cases are excluded from the workplace until our return-to-work requirements are met.
- Excluding employees with COVID-19 exposure from the workplace for 14 days after the last known COVID-19 exposure to a COVID-19 case.
- Continuing and maintaining an employee's earnings, seniority, and all other employee rights and benefits whenever we've demonstrated that the COVID-19 exposure is work related. Employees will be allowed sick leave benefits, testing at School cost, retention of job and work status for a period
- Providing employees at the time of exclusion with information on available benefits.

Reporting, Recordkeeping, and Access

It is our policy to:

- Report information about COVID-19 cases at our workplace to the local health department whenever required by law, and provide any related information requested by the local health department.
- Report immediately to Cal/OSHA any COVID-19-related serious illnesses or death, as defined under CCR Title 8 section 330(h), of an employee occurring in our place of employment or in connection with any employment.
- Maintain records of the steps taken to implement our written COVID-19 Prevention Program in

accordance with CCR Title 8 section 3203(b).

- Make our written COVID-19 Prevention Program available at the workplace to employees, authorized employee representatives, and to representatives of Cal/OSHA immediately upon request.
- Use the **Appendix C: Investigating COVID-19 Cases** form to keep a record of and track all COVID-19 cases. The information will be made available to employees, authorized employee representatives, or as otherwise required by law, with personal identifying information removed.

Return-to-Work Criteria

- COVID-19 cases with COVID-19 symptoms will not return to work until all the following have occurred:
 - At least 24 hours have passed since a fever of 100.4 or higher has resolved without the use of fever-reducing medications.
 - COVID-19 symptoms have improved.
 - At least 10 days have passed since COVID-19 symptoms first appeared.
 - COVID-19 cases who tested positive but never developed COVID-19 symptoms will not return to work until a minimum of 10 days have passed since the date of specimen collection of their first positive COVID-19 test.
 - A negative COVID-19 test will not be required for an employee to return to work if the two criteria above are met.
 - If an order to isolate or quarantine an employee is issued by a local or state health official, the employee will not return to work until the period of isolation or quarantine is completed or the order is lifted. If no period was specified, then the period will be 10 days from the time the order to isolate was effective, or 14 days from the time the order to quarantine was effective.
-

Additional Consideration #1: Multiple COVID-19 Infections and COVID-19 Outbreaks

This section of CSP will apply if there are 3 or more COVID-19 cases at the Center within a 14-day period (“Outbreak”) and will stay in effect until there are no new COVID-19 cases detected in our workplace for a 14-day period.

COVID-19 testing

- Under an Outbreak condition, we will provide COVID-19 testing to all employees in our exposed workplace except for employees who were not present during the period of an Outbreak identified by a local health department or the relevant 14-day period. COVID-19 testing will be provided at no cost to employees during employees’ working hours.
- COVID-19 testing consists of the following:
 - All employees in our exposed workplace will be immediately tested and then tested again one week later. Negative COVID-19 test results of employees with COVID-19 exposure will not impact the duration of any quarantine period required by, or orders issued by, the local health department.
 - After the first two COVID-19 tests, we will continue to provide COVID-19 testing of employees who remain at the workplace at least once per week, or more frequently if recommended by the local health department, until there are no new COVID-19 cases detected in our workplace for a 14-day period.
 - We will provide additional testing when deemed necessary by Cal/OSHA.

Exclusion of COVID-19 cases

We will ensure COVID-19 cases and employees who had COVID-19 exposure are excluded from the workplace in accordance with our CSP **Exclusion of COVID-19 Cases** and **Return to Work Criteria** requirements, and local health officer orders if applicable.

Investigation of workplace COVID-19 illness

We will immediately investigate and determine possible workplace-related factors that contributed to the COVID-19 outbreak in accordance with our CPP **Investigating and Responding to COVID-19 Cases**.

COVID-19 investigation, review and hazard correction

In addition to our CSP **Identification and Evaluation of COVID-19 Hazards** and **Correction of COVID-19 Hazards**, we will immediately perform a review of potentially relevant COVID-19 policies, procedures, and controls and implement changes as needed to prevent further spread of COVID-19.

The investigation and review will be documented and include:

- Investigation of new or unabated COVID-19 hazards including:
 - Our leave policies and practices and whether employees are discouraged from remaining home when sick.
 - Our COVID-19 testing policies.
 - Insufficient outdoor air.
 - Insufficient air filtration.
 - Lack of physical distancing.

- Updating the review:
 - Every thirty days that the outbreak continues.
 - In response to new information or to new or previously unrecognized COVID-19 hazards.
 - When otherwise necessary.
- Implementing changes to reduce the transmission of COVID-19 based on the investigation and review. We will consider:
 - Moving indoor tasks outdoors or having them performed remotely.
 - Increasing outdoor air supply when work is done indoors.
 - Improving air filtration.
 - Increasing physical distancing as much as possible.
 - Respiratory protection.
 - [describe other applicable controls].

Notifications to the local health department

- Immediately, but no longer than 48 hours after learning of three or more COVID-19 cases in our workplace, we will contact the local health department for guidance on preventing the further spread of COVID-19 within the workplace.
- We will provide to the local health department the total number of COVID-19 cases and for each COVID-19 case, the name, contact information, occupation, workplace location, business address, the hospitalization and/or fatality status, and North American Industry Classification System code of the workplace of the COVID-19 case, and any other information requested by the local health department. We will continue to give notice to the local health department of any subsequent COVID-19 cases at our workplace.

Additional Consideration #2: Major COVID-19 Outbreaks

This section of CSP will be followed should the School experience 20 or more COVID-19 cases within a 30-day period ("Major Outbreak") and will stay in effect until there are no new COVID-19 cases detected in our workplace for a 14-day period.

COVID-19 testing

Under a Major Outbreak condition, we will direct staff to twice per week COVID-19 testing, or more frequently if recommended by the local health department, to all employees present at our exposed workplace during the relevant 30-day period(s) and who remain at the workplace. COVID-19 testing will be provided at no cost to employees during employees' working hours.

Exclusion of COVID-19 cases

We will ensure COVID-19 cases and employees with COVID-19 exposure are excluded from the workplace in accordance with our CSP **Exclusion of COVID-19 Cases** and **Return to Work Criteria**, and any relevant local health department orders.

Investigation of workplace COVID-19 illnesses

We will comply with the requirements of our CPP **Investigating and Responding to COVID-19 Cases**.

COVID-19 hazard correction

In addition to the requirements of our CSP **Correction of COVID-19 Hazards**, we will take the following actions:

- We will evaluate whether to halt some or all operations at our workplace until COVID-19 hazards have been corrected.
- We will determine the need for a respiratory protection program or changes to an existing respiratory protection program under CCR Title 8 section 5144 to address COVID-19 hazards.
- In buildings or structures with mechanical ventilation, we will filter recirculated air with Minimum Efficiency Reporting Value (MERV) 13 or higher efficiency filters if compatible with the ventilation system. If MERV-13 or higher filters are not compatible with the ventilation system, we will use filters with the highest compatible filtering efficiency. We will also evaluate whether portable or mounted High Efficiency Particulate Air (HEPA) filtration units, or other air cleaning systems would reduce the risk of transmission and implement their use to the degree feasible.
- Implement any other control measures deemed necessary by Cal/OSHA.

Notifications to the local health department

We will comply with the requirements of our Multiple COVID-19 Infections and COVID-19 Outbreaks-Notifications to the LHD.

Additional Consideration #3: COVID-19 Prevention in Employer-Provided Housing

(Not applicable)

Additional Consideration #4: COVID-19 Prevention in Employer-Provided Transportation to and from Work

(Not applicable)

Attachment 1: Campus Cleaning and Safety Protocols and Practices

FACULTY AND STAFF TRAINING

Prior to returning to in-person instruction all school staff and faculty will complete training in health and safety practices and protocols, including:

COVID Review

COVID 19 Transmission and prevention:

- *Proper handwashing: when, how
- *Proper use of a mask: when, how, types
- *Principles of COVID: modes of transmission, most vulnerable, best practices to keep yourself and others safe

Personal Health

Daily Health Survey:

- When to stay home (symptom list)
- When to see the Doctor
- Scenarios (chart)

Integrated Pest Management Training

IPM and chemical safety training

- Clean, Sanitize, Disinfect
- When to Clean, Sanitize and Disinfect (chart)
- How to Clean, Sanitize and Disinfect
- What cleansers and disinfectants are we using?
- Hand Sanitizer is for humans-therefore a topical antiseptic and FDA not EPA
- PPE
- Labels
 - *Signal word: Caution, Warning, Danger
 - *Ingredients
 - *Precautionary statements
 - *Storage and Disposal
 - *First Aid
 - *Directions for use (what you are using it for should be listed)

SANITATION PROTOCOL FOR CLASSROOMS

- Handwashing stations have been installed by every classroom.
- Soap and cleaning supplies are provided at every handwashing station.
- Hands will be washed often for at least 20 seconds with soap.
- Handwashing at the beginning of the day, before mealtimes, after recess, after using the restroom, and as needed.
- FDA approved hand sanitizers with at least 60% ethanol or 70% isopropanol will be used when there is not access to water.
- Cleaning products are used that meet the Environmental Protection Agency (EPA)'s approved for use against COVID19 list.
- Bathrooms and indoor spaces are cleaned daily, and frequently touched surfaces are cleaned daily or more frequently as needed.
- Meals will be eaten outdoors when possible.
- School hours and/or other procedures have been modified to provide adequate time for a regular, thorough cleaning, product stocking, or other measures.
- Staff is provided adequate time to implement cleaning practices before and after shifts.

PROTOCOL FOR ILL STUDENTS OR STAFF

- All staff and families must self-check for symptoms of COVID19 or other illnesses prior to arriving at school.
- Staff and families will notify the school if they are ill.
- Employers and employees are aware that they can call Marin Public Health if a suspected exposure has occurred at 415-473-7191.
- If a student falls ill during the school day, they will go to the designated isolation area set up on campus and wait to be picked up.
- Marin County Public Health will be notified immediately at 415-473-7191 of any cases of COVID19 in the Heartwood community and the Marin County Public Health Protocols & Communication Template will be followed.
- If a student or staff member is diagnosed with COVID-19, Marin County Public Health will provide assistance in the assessment of potential worksite exposures, and any recommended testing, quarantine, or isolation instructions.

HEALTH ADDENDUM TO THE HEARTWOOD CHARTER SCHOOL PARENT HANDBOOK

- Parents agree to abide by all Marin Public Health guidelines.
- Parents agree to check their family members' health daily.
- Parents agree to keep their child(ren) home when showing signs of illness.
- Parents agree to have a backup plan for pickup and childcare if their child becomes ill at school, and to be reachable by phone.
- Parents will wait in the car until the child(ren) being dropped off have been checked in by Heartwood faculty or staff.
- Parents will wait in the car while picking up children.
- Families are encouraged to keep a social contact diary to make tracing easy if a community member becomes infected.



HEARTWOOD
CHARTER SCHOOL

Attachment 2: Faculty/Staff Daily Health Screening

Faculty/Staff Full Name:

I affirm that I have been without fever for 24 hours without the use of fever-reducing medications and that I have not had symptoms of respiratory illness (cough, shortness of breath, or runny nose) in the past 24 hours?

Yes or No

Are you showing any of the following symptoms: fever or chills, cough, shortness of breath or difficulty breathing, fatigue, muscle or body aches, Headache, New loss of taste or smell, sore throat, congestion or runny nose, nausea or vomiting, diarrhea?

Yes or No

Have you been in close contact with anyone who has tested positive for COVID within the last 14 days?

Yes or No

Attachment 3: Student Daily Health Screening

Parent/Guardian Full Name:

Student Full Name:

Has your child had a temperature of 100.4 and higher over the past 24 hours?

Yes or No

Is your child showing any of the following symptoms: fever or chills, cough, shortness of breath or difficulty breathing, fatigue, muscle or body aches, headache, new loss of taste or smell, sore throat, congestion or runny nose, nausea or vomiting, diarrhea?

Yes or no

Has your child been in close contact with anyone who has tested positive for COVID within the last 14 days?

Yes or No

Attachment 4: Scenarios and Template Communications

Scenario	Action	Communication
A student or staff member either exhibits COVID-19 symptoms, answers yes to a health screening question or has a temp of 100.4	<ul style="list-style-type: none"> • Report information to administrator, send home • Contact Healthcare provider/Public Health for testing (recommend testing) • If positive, see Scenario #3; If negative, see Scenario #4 <p>School/Classroom OPEN</p>	No Action is needed.
A family member or someone in close contact with a student or staff member test positive for COVID-19.	<p>Report information to administrator, send home, quarantine for 14 days</p> <ul style="list-style-type: none"> • Contact Healthcare provider/Public Health for testing (recommend testing) • School/Classroom OPEN 	<p>To: Student Families and Staff</p> <p>Template Letter</p> <p>Household Member or contact w/ C19+..</p>
A student or staff member tests positive for COVID-19.	<ul style="list-style-type: none"> • Report information to administrator, send home, isolate as per Public Health • Families of Students and Staff: quarantine and contact Healthcare provider/ Public Health for testing • Classroom CLOSED for 14 days from last exposure • School Remains OPEN 	<p>To: Student Families and Staff</p> <p>-Phone call and</p> <p>-Template Letter.</p> <p>Confirmed C19+ in Cohort.</p>
A student or staff member tests negative for COVID-19 after any of the reasons scenarios a, b or c.	<ul style="list-style-type: none"> • May return to school 24 hours after symptoms resolve • 14 day quarantine required for close contact with COVID-19 positive case • School/Classroom OPEN 	<p>Consider notification to families and staff if prior awareness of testing.</p> <p>-Template Letter</p> <p>Negative Test Cohort Member.</p>

Link: 06-15-20 Marin County Protocols Summary English/Spanish Combined

Appendix A: Identification of COVID-19 Hazards

All persons, regardless of symptoms or negative COVID-19 test results, will be considered potentially infectious. Particular attention will be paid to areas where people may congregate or come in contact with one another, regardless of whether employees are performing an assigned work task or not. For example: meetings, entrances, bathrooms, hallways, aisles, walkways, elevators, break or eating areas, cool-down areas, and waiting areas.

Evaluation of potential workplace exposure will be to all persons at the workplace or who may enter the workplace, including coworkers, employees of other entities, members of the public, customers or clients, and independent contractors. We will consider how employees and other persons enter, leave, and travel through the workplace, in addition to addressing fixed work locations.

Person conducting the evaluation:

Date:

Name(s) of employee and authorized employee representative that participated:

Interaction, area, activity, work task, process, equipment and material that potentially exposes employees to COVID-19 hazards	Places and times	Potential for COVID-19 exposures and employees affected, including members of the public and employees of other employers	Existing and/or additional COVID-19 prevention controls, including barriers, partitions and ventilation

Appendix B: Form for Periodic COVID-19 Inspections

Date:

Name of person conducting the inspection:

Work location evaluated:

Exposure Controls	Status	Person Assigned to Correct	Date Corrected
Engineering			
Ventilation (amount of fresh air and filtration maximized)			
Administrative			
Physical distancing (Outbreak)			
Surface cleaning and disinfection (frequently enough and adequate supplies)			
Hand washing facilities (adequate numbers and supplies)			
Disinfecting and hand sanitizing solutions being used according to manufacturer instructions			
PPE (not shared, available and being worn)			
Face coverings (cleaned sufficiently often)			
Gloves			
Face shields/goggles			
Respiratory protection			

Appendix C: Form for Investigating COVID-19 Cases

All personal identifying information of COVID-19 cases or symptoms will be kept confidential. All COVID-19 testing or related medical services provided by us will be provided in a manner that ensures the confidentiality of employees, with the exception of unredacted information on COVID-19 cases that will be provided immediately upon request to the local health department, CDPH, Cal/OSHA, the National Institute for Occupational Safety and Health (NIOSH), or as otherwise required by law.

All employees' medical records will also be kept confidential and not disclosed or reported without the employee's express written consent to any person within or outside the workplace, with the following exceptions: (1) Unredacted medical records provided to the local health department, CDPH, Cal/OSHA, NIOSH, or as otherwise required by law immediately upon request; and (2) Records that do not contain individually identifiable medical information or from which individually identifiable medical information has been removed.

Date:

Name of person conducting the investigation:

Employee (or non-employee*) name:		Occupation (if non-employee, why they were in the workplace):	
Location where employee worked (or non-employee was present in the workplace):		Date investigation was initiated:	
Was COVID-19 test offered?		Name(s) of staff involved in the investigation:	
Date and time the COVID-19 case was last present in the workplace:		Date of the positive or negative test and/or diagnosis:	
Date the case first had one or more COVID-19 symptoms:		Information received regarding COVID-19 test results and onset of symptoms (attach documentation):	
Results of the evaluation of the potential COVID-19 case, all locations visited during the high-risk exposure period, and who may have been exposed (attach additional information):			

Notice given (within one business day, in a way that does not reveal any personal identifying information of the COVID-19 case) of the potential COVID-19 exposure to:			
All employees who may have had COVID-19 exposure	Date:		
	Names of employees that were notified:		
Independent contractors and other employers present at the workplace during the high-risk exposure period.	Date:		
	Names of individuals that were notified:		
What were the workplace conditions that could have contributed to the risk of COVID-19 exposure?		What could be done to reduce exposure to COVID-19?	
Was local health department notified?		Date:	

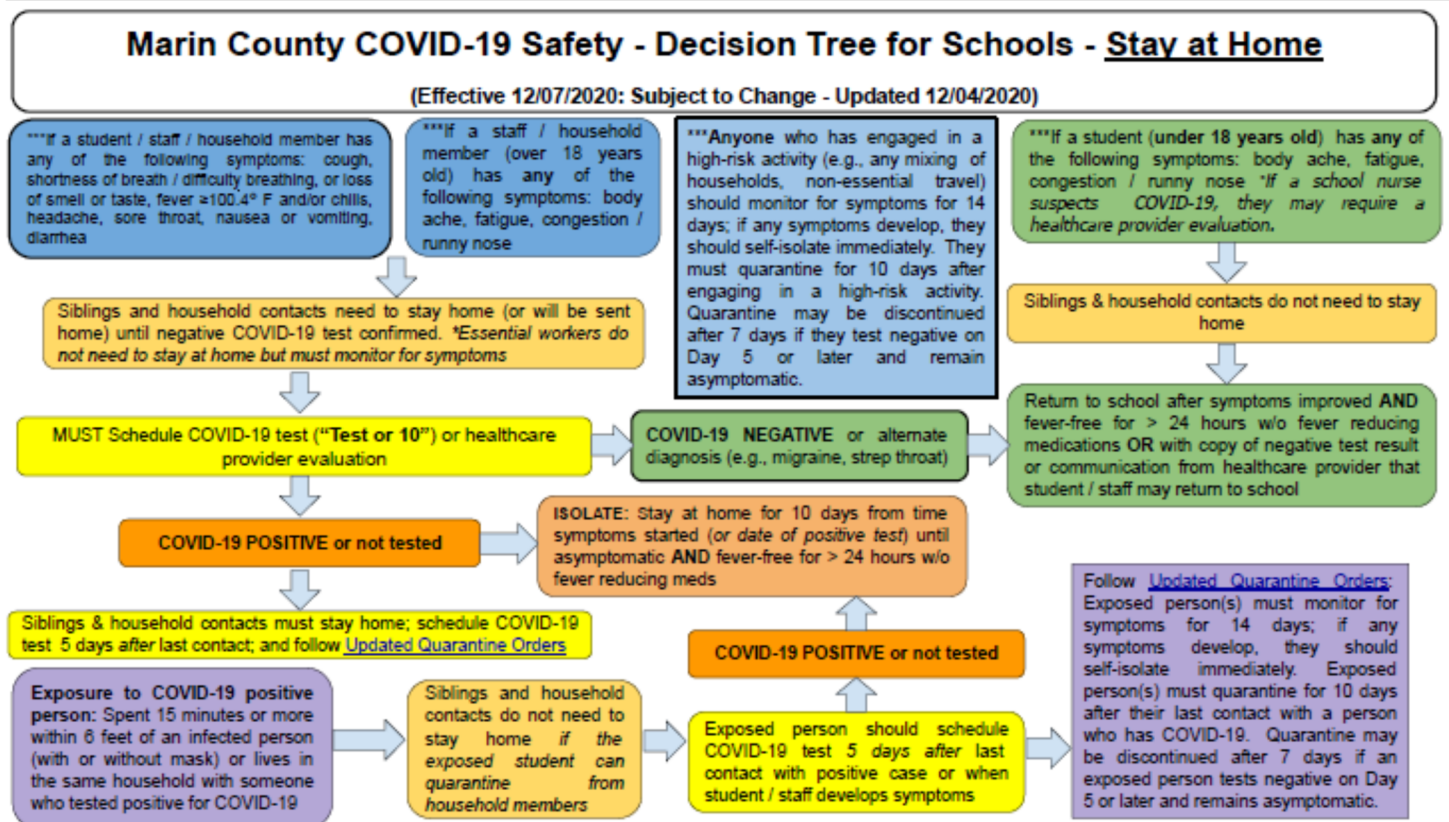
*Should an employer be made aware of a non-employee infection source COVID-19 status.

Appendix D: Form for COVID-19 Training Roster**Date:****Person that conducted the training:**

Employee Name	Signature



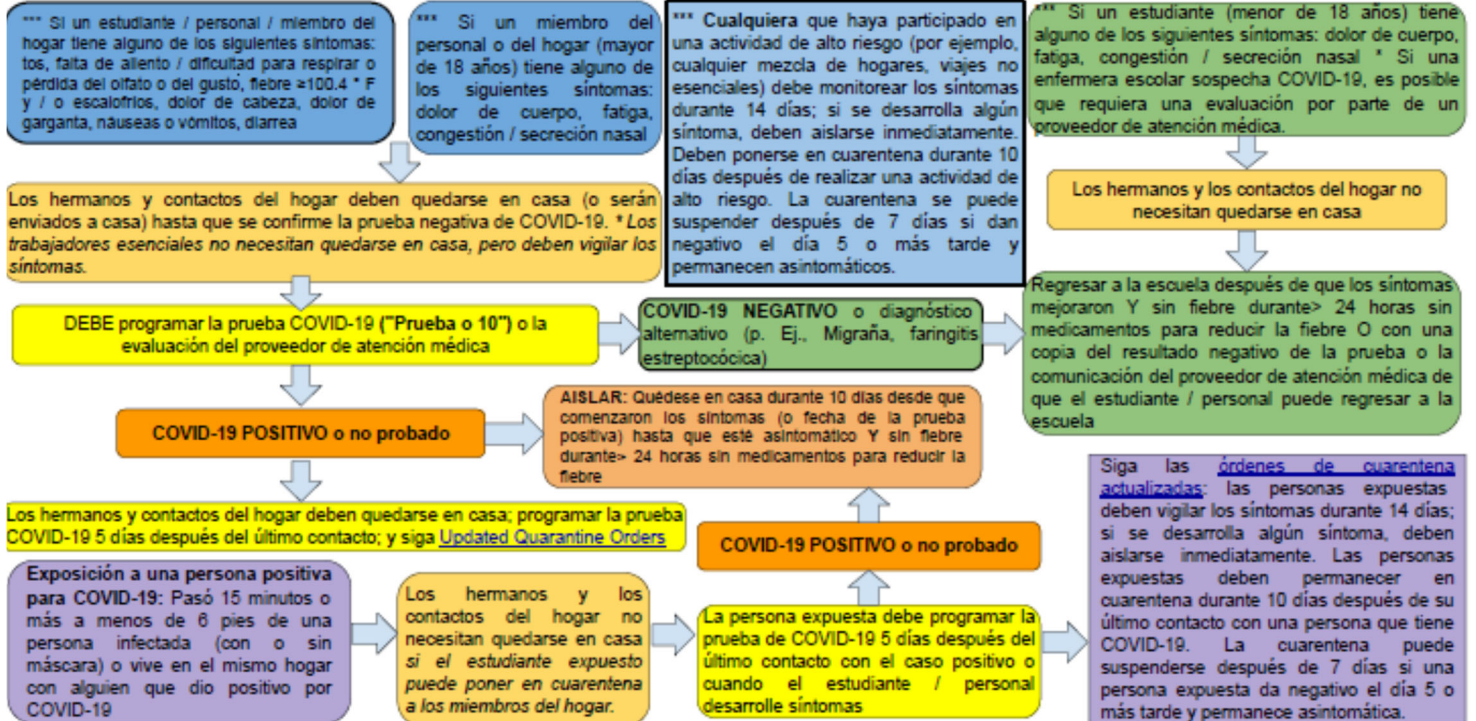
Appendix F: MCOE Decision Tree





Seguridad del Condado de Marin COVID-19 Árbol de Decisiones para las Escuelas - Quedarse en Casa

(Efectivo 12/07/2020: Sujeto a Cambios - Actualizado el 12/04/2020)



Appendix E: References

California Department of Public Health

COVID-19 Health Guidance for K-12 Schools, 2021-22 School Year

<https://www.cdph.ca.gov/Programs/CID/DCDC/Pages/COVID-19/K-12-Guidance-2021-22-School-Year.aspx>

California Department of Industrial Relations

Revisions to the COVID-19 Prevention Emergency Temporary Standards

<https://www.dir.ca.gov/dosh/coronavirus/Revisions-FAQ.html>

Marin County School Guidelines

Public Health Guided Site-Based Classroom Instruction

[Haga Clic Aquí Para Ver La Versión en Español](#)

**Dr. Matt Willis, Marin County Public Health Officer and
Dr. Lisa Santora, Marin County Deputy Public Health Officer
Mary Jane Burke, Marin County Superintendent of Schools**

Issued June 18, 2020

Revised August 12, 2020 - December 8, 2020 - March 23, 2021

For 2021-22 School Year - Revised August 18, 2021 - September 7, 2021

Updated October 11, 2021 (#8, #9, #18, #22, #24, #30, #31)

The purpose of this document is to provide guidelines to Marin County educational institutions — including public, private, independent and parochial TK-12 schools—to facilitate fulltime site-based classroom instruction for the 2021-22 school year. The evolving nature of the COVID-19 pandemic requires the need to rethink common protocols and practices in the classroom setting with the understanding that these guidelines could change as the situation evolves. Some guidelines are **not currently applicable** and may phase in or out as determined by Public Health.

1. All activities are consistent with and will adjust to changing applicable state and local Public Health orders.
2. Health and safety practices and protocols are in place, including hand washing, appropriate face coverings, access to essential protective equipment, and up to date attendance tracking of students and all adults.
3. Training is provided to all staff, students and families reinforcing the importance of health and safety practices and protocols.
4. A primary and secondary point of contact are established, identified and trained at each school site to direct questions or concerns around practices, protocols, or potential exposure. These points of contact will serve as liaisons to Public Health, and contact information is identified in the School Site-Specific Protection Plan (COVID-19 Safety Plan).
5. Plans are implemented for intensified cleaning and disinfecting, including training for all staff and access to cleaning supplies and essential protective equipment, and regular disinfecting of frequently touched surfaces.
6. Parents, caregivers, or guardians should monitor students for symptoms of infectious illness every day through home-based symptom screening, and staff should conduct daily health screening self-assessment.
7. Staff and students who are sick are expected to stay home, and an isolation area is identified for students who begin to exhibit symptoms during the school day, until they can be picked up.

8. Schools and districts requesting Public Health support for testing (including rapid response testing and technical assistance) must complete enrollment and training in the California COVID-19 K-12 Schools Testing Program no later than October 31, 2021. Testing of students must include appropriate parental permissions obtained in advance. If a vaccinated or unvaccinated student or staff member develops COVID-like symptoms, or has close contact with someone confirmed with COVID-19, testing is recommended.
9. Protocols, actions and template communications are in place for COVID-19 related scenarios (link: [Marin County Public Health Protocols & Communication Templates](#))
10. **Not currently applicable:** Physical distancing of six feet is maintained between adults and between adults and students, where practicable; three feet distance is permissible between students within a classroom or instructional area where requirements herein are in practice. Seating charts and attendance records will be maintained.
11. **Not currently applicable:** For elementary schools, stable classroom groups (up to standard class size at each respective grade level) are maintained throughout each school day. Limited mixing of students is permissible as long as accurate attendance data is maintained on a daily basis.
12. **Not currently applicable:** For middle and high schools, larger stable groups made up of students from more than one classroom may be arranged as long as accurate attendance data for students and adults is maintained on a daily basis while avoiding school wide mixing of students and staff.
13. **Not currently applicable:** Where practicable, desks are arranged facing forward to minimize face to face proximity between students.
14. **Applicable:** School staff are permitted to visit and instruct more than one classroom group and must document/record visits to classrooms that are not identified as their primary classroom, following face covering and **(Not currently applicable)** physical distancing protocols.
15. **Not currently applicable:** Routes for entry and exit to the campus will be designated for each classroom group, using as many entrances/exits as feasible.
16. **Not currently applicable:** Schedules for arrivals, recess and lunch will be strategically coordinated to prevent mixing of classroom groups.
17. **Not currently applicable:** Congregate movement through hallways will be minimized as much as practicable.
18. **Applicable:** Large gatherings (i.e., school assemblies) are allowed indoors. Attendees must wear facial coverings indoors. For [indoor events](#) with 1,000 or more people, attendees must provide proof that they: are fully vaccinated, or

have proof of a negative COVID-19 test completed within 72 hours of the scheduled event. Attendees cannot self-attest to verify vaccination status or a negative test result.

19. **Not currently applicable:** The use of outdoor space for instructional purposes is maximized, shared, and coordinated to ensure students remain in their classroom groups. **Applicable:** Schools should assess indoor air quality and implement strategies that increase the amount of outdoor air brought into buildings, optimize current HVAC systems and supplement with portable air cleaners when practicable. Keep windows and other sources of natural ventilation open to the greatest extent possible. In the event of poor air quality updated [School Air Quality Recommendations](#) should be followed.
20. **Not currently applicable:** Use of shared playground equipment will be limited in favor of physical activities that require less contact with surfaces. If used, outdoor playgrounds/natural play areas only need routine maintenance.
21. **Not currently applicable:** Use of non-classroom space for instruction such as gymnasiums and multi-use rooms should be considered to support physical distancing with cleaning between uses.
22. **Applicable:** Meals will be served outside when possible. If meals are served indoors, schools should have assigned seating charts. **Not currently applicable:** Classrooms or other spaces in addition to cafeterias or dining rooms will be utilized to maximize physical distancing while eating, with individually plated or bagged meals as much as practicable.
23. **Not applicable:** Routines and schedules will be developed to enable students and staff to regularly wash their hands at staggered intervals.
24. All staff as well as all students are required to wear face coverings indoors, unless there is a medical or behavioral contraindication or exemption. Students from grades TK - 2 should be supported and taught how to wear them properly. Masks are optional outdoors and, in general, people do not need to wear masks when outdoors (e.g., participating in outdoor play, recess, and physical education activities). Staff and students should follow [CDC](#) and [CDPH](#) face covering guidance.
25. Training will be provided for staff and students on proper use of face coverings which will include instruction to minimize touching of face coverings, and how to ensure a proper fit.
26. **Not currently applicable:** Sharing of supplies, manipulatives, toys, sports equipment, and other learning and recreational materials will be limited and each student will have separate individually labeled boxes or cubbies.
27. **Not currently applicable:** Sharing of electronic devices, clothing, books and other games or learning aids will be avoided as much as practicable.
28. **Not currently applicable:** Use of physical barriers (eg. privacy boards or clear screens)

may be considered but should not replace other measures herein.

29. Non-essential visitors, including parent volunteers will be limited. Essential workers will be required to adhere to all health and safety guidelines. Any substitutes, contractors, visitors or volunteers working directly with students should be fully vaccinated.
30. All eligible students and staff should get vaccinated as soon as possible and are required to verify their vaccination status. Staff that are not fully vaccinated are required to be tested weekly. Staff and student vaccination rate data (the percentage of staff and students who are fully vaccinated) should be published and posted on the school website and updated on a monthly basis. Vaccination status of individual students and staff will not be made public.
31. Other School related youth activities (ie. student transportation, sports, music, drama, after school care, etc.) will follow updated CDPH and Marin County Public Health guidance.
32. A [School Site-Specific Protection Plan](#) (SSSPP) / COVID Safety Plan (CSP) outlining the above measures is completed, posted and updated on school or district websites and shared with all staff and families. Schools should update SSSPPs / CSPs as state and local Public Health guidance changes.

Resource Documents:

- [September 10, 2021 Public Health Update Interim Guidance for K-12 School and Youth Performing Arts, Sports and extracurricular activities](#)
- [July 12, 2021 CDPH COVID-19 Public Health Guidance for K-12 Schools in California, 2021-22 School Year](#)
- [July 12, 2021 CDPH K-12 school-based COVID-19 testing strategies for school year 2021-22](#)
- [July 9, 2021 CDC Guidance for COVID-19 Prevention in K-12 Schools](#)
- [July 20, 2021 What Parents Should Know About the Updated COVID-19 School Guidance](#)
- [June 22, 2021 Safely reopening California](#)
- [July 27, 2021 CDC Interim Public Health Recommendations for Fully Vaccinated People](#)
- [July 29, 2021 California Department of Public Health Vaccine Record Guidelines & Standards](#)
- [CDC K-12 Guidance on Disabilities or Other Health Care needs](#)
- [State of California Safe Schools For All Hub](#)
- [July 28, 2021 CDPH - Guidance of the the Use of Face Coverings](#)
- [June 15, 2021 CDC Cleaning and Disinfecting your Facility](#)
- [CDPH Indoor Air Quality](#)
- [June 30, 2021 CDPH Travel Guidance](#)
- [May 25, 2021 Marin County School Air Quality Activity Recommendations](#)
- [June 21, 2020 Cal/OSHA Prevention Emergency Temporary Standards - What Employers Need to Know About the June 18 Standards](#)
- [June 11, 2021 CDPH State Public Health Orders](#)
- [June 11, 2021 CDC How to Wear Masks](#)
- [CDC Symptoms of COVID-19](#)
- [California K-12 School Antigen Testing Program Playbook](#)
- [Marin County Schools Mitigation Strategies Continuum 2021-22 School Year](#)

- [Public Health References for Rethinking Schools Bibliography](#)

Guía para las Escuelas del Condado de Marin

Instrucción en el aula guiadas por la Salud Pública

Dr. Matt Willis, Oficial de Salud Pública del Condado de Marin
Dr. Lisa Santora, Diputado de Salud Pública del Condado de Marin
Mary Jane Burke, Superintendente de Escuelas del Condado de Marin

Emitida Junio el 18, 2020

Revisada el 12 de Agosto, 2020 - Diciembre 8, 2020 - Marzo 23, 2021

Para el año escolar 2021-22 - Revisado del 18 de Agosto de 2021 al 7 de septiembre de 2021

Actualizado el 11 de octubre de 2021 (#8, #9, #18, #22, #24, #30, #31)

El propósito de este documento es proporcionar pautas a las instituciones educativas del condado de Marin, incluidas las escuelas TK-12 públicas, privadas, independientes y parroquiales, para facilitar la instrucción en el aula de tiempo completo en el sitio para el año escolar 2021-22. La naturaleza evolutiva de la pandemia COVID-19 requiere la necesidad de repensar los protocolos y prácticas comunes en el aula con el entendimiento de que estas pautas podrían cambiar a medida que evoluciona la situación. Algunas pautas **no se aplican actualmente** y pueden entrar o salir gradualmente según lo determine Salud Pública.

1. Todas las actividades son consistentes con y se ajustarán a las órdenes cambiantes de Salud Pública locales y estatales.
2. Se han establecido prácticas y protocolos de salud y seguridad, incluyendo lavado de manos, cubiertas faciales apropiadas, acceso a equipo de protección esencial y seguimiento actualizado de la asistencia de los estudiantes y todos los adultos.
3. Se proporciona capacitación a todo el personal, estudiantes y familias reforzando la importancia de las prácticas y protocolos de salud y seguridad.
4. Se establece, identifica y capacita un punto de contacto primario y secundario en cada sitio escolar para dirigir preguntas o preocupaciones acerca de prácticas, protocolos o exposición potencial. Estos puntos de contacto servirán como enlaces a Salud Pública, y la información de contacto se identifica en el Plan de Protección Específica del Sitio Escolar (COVID-19 Safety Plan).
5. Se han implementado planes para una limpieza y desinfección intensificadas, incluyendo la capacitación de todo el personal y el acceso a suministros de limpieza y equipo de protección esencial, y la desinfección periódica de las

superficies que se tocan con frecuencia.

6. Los padres, cuidadores o tutores deben vigilar a los estudiantes para detectar síntomas de enfermedad infecciosa todos los días a través de la detección de síntomas en el hogar, y el personal debe llevar a cabo la autoevaluación diaria de la evaluación de salud.
7. Se espera que el personal y los estudiantes que estén enfermos se queden en casa, y se identifica un área de aislamiento para los estudiantes que comienzan a mostrar síntomas durante el día escolar, hasta que puedan ser recogidos.
8. Las escuelas y distritos que solicitan apoyo de Salud Pública para las pruebas (incluyendo pruebas de respuesta rápida y asistencia técnica) deben completar la inscripción y capacitación en el Programa de Pruebas de Escuelas K-12 COVID-19 de California a más tardar el 31 de octubre de 2021. Las pruebas de los estudiantes deben incluir los permisos apropiados de los padres obtenidos por adelantado. Si un estudiante o miembro del personal vacunado o no vacunado desarrolla síntomas similares a COVID, o tiene contacto cercano con alguien confirmado con COVID-19, se recomienda la prueba.
9. Existen protocolos, acciones y modelos de comunicaciones para escenarios relacionados con COVID-19 (Enlace: [Marin County Public Health Protocols & Communication Templates](#))
10. **Actualmente no aplicable:** Se mantiene un distanciamiento físico de seis pies entre adultos y entre adultos y estudiantes, donde sea factible; se permite una distancia de tres pies entre estudiantes dentro de un salón de clase o área de instrucción donde los requisitos aquí descritos están en práctica. Se mantendrán los gráficos de asientos y los registros de asistencia.
11. **Actualmente no aplicable:** Para las escuelas primarias, se mantienen grupos estables de aulas (hasta el tamaño de clase estándar en cada nivel de grado respectivo) durante cada día escolar. Se permite una mezcla limitada de estudiantes siempre que se mantengan datos de asistencia precisos a diario.
12. **Actualmente no aplicable:** Para las escuelas intermedias y secundarias, se pueden organizar grupos estables más grandes compuestos por estudiantes de más de un salón de clases siempre que se mantengan a diario datos precisos de asistencia de estudiantes y adultos, evitando la mezcla de estudiantes y personal en toda la escuela.
13. **Actualmente no aplicable:** Cuando sea posible, los escritorios se colocarán mirando hacia adelante para minimizar la proximidad cara a cara entre los

estudiantes.

14. **Aplicable:** El personal de la escuela tiene permiso para visitar e instruir a más de un grupo de salón de clase y debe documentar/registrar visitas a salones de clase que no son identificados como su salón de clase primario, siguiendo protocolos de cobertura facial (no aplicables actualmente) y distanciamiento físico.
15. **Actualmente no aplicable:** Se designarán rutas de entrada y salida al campus para cada grupo de aula, utilizando tantas entradas / salidas como sea posible.
16. **Actualmente no aplicable:** Los horarios para las llegadas, el recreo y el almuerzo se coordinarán estratégicamente para evitar la mezcla de grupos de aula.
17. **Actualmente no aplicable:** El movimiento colectivo a través de los pasillos se minimizará tanto como sea posible.
18. **Aplicable:** Se permiten grandes reuniones (es decir, asambleas escolares) en el interior. Los asistentes deben usar cubiertas faciales en el interior. Para [eventos en interiores](#) con 1,000 o más personas, los asistentes deben proporcionar prueba de que: están completamente vacunados o tienen prueba de una prueba COVID-19 negativa completada dentro de las 72 horas posteriores al evento programado. Los asistentes no pueden auto-declarar para verificar el estado de vacunación o un resultado negativo de la prueba.
19. **Actualmente no aplicable:** El uso del espacio al aire libre para propósitos de instrucción es maximizado, compartido y coordinado para asegurar que los estudiantes permanezcan en sus grupos de salón de clase. **Aplicable:** Las escuelas deben evaluar la calidad del aire interior e implementar estrategias que aumenten la cantidad de aire exterior que entra en los edificios, optimizar los sistemas actuales de HVAC y complementar con limpiadores de aire portátiles cuando sea factible. Mantenga las ventanas y otras fuentes de ventilación natural abiertas en la mayor medida posible. En el caso de mala calidad del aire, se deben seguir las [Recomendaciones de la Calidad de Aire en las Escuelas](#) actualizadas.
20. **Actualmente no aplicable:** El uso de equipo compartido de juegos será limitado en favor de actividades físicas que requieren menos contacto con superficies. Si se utiliza, los patios de recreo al aire libre/áreas de juegos naturales sólo necesitan mantenimiento rutinario.
21. **Actualmente no aplicable:** Se debe considerar el uso de espacio no presencial para la instrucción, como gimnasios y salas de usos múltiples, para apoyar el distanciamiento físico con la limpieza entre usos.
22. **Aplicable:** Las comidas se servirán afuera cuando sea posible. Si las comidas se sirven en interiores, las escuelas deben tener tablas de asientos asignadas.
Actualmente no aplicable: Aulas u otros espacios, además de cafeterías o

comedores, se utilizarán para maximizar el distanciamiento físico mientras se come, con comidas individualmente chapadas o en bolsas tanto como sea posible.

23. **No aplicable:** Se desarrollarán rutinas y horarios para permitir que los estudiantes y el personal se laven las manos con regularidad a intervalos escalonados.
24. Todo el personal, así como todos los estudiantes, están obligados a usar cubiertas faciales en el interior, a menos que haya una contraindicación o exención médica o conductual. Los estudiantes de los grados TK - 2 deben ser apoyados y enseñados cómo usarlos apropiadamente. Las máscaras son opcionales al aire libre y, en general, las personas no necesitan usar máscaras al aire libre (por ejemplo, participando en juegos al aire libre, recreos y actividades de educación física). El personal y los estudiantes deben seguir la guía de los [CDC](#) y [CDPH](#) para cubrir la cara.
25. Se proporcionará capacitación para el personal y los estudiantes sobre el uso adecuado de las mascarillas, que incluirá instrucciones para minimizar el contacto con las mascarillas y cómo garantizar un ajuste adecuado.
26. **Actualmente no aplicable:** El intercambio de útiles, manipulables, juguetes, equipo deportivo y otros materiales de aprendizaje y recreación será limitado y cada estudiante tendrá cajas o cubículos separados etiquetados individualmente.
27. **Actualmente no aplicable:** Se evitará compartir dispositivos electrónicos, ropa, libros y otros juegos o ayudas de aprendizaje tanto como sea posible.
28. **Actualmente no aplicable:** El uso de barreras físicas (por ejemplo, tableros de privacidad o pantallas claras) puede ser considerado, pero no debe reemplazar otras medidas en este documento.
29. Los visitantes no esenciales, incluidos los padres voluntarios, serán limitados. Se requerirá que los trabajadores esenciales se adhieran a todas las pautas de salud y seguridad. Todos los sustitutos, contratistas, visitantes o voluntarios que trabajen directamente con los estudiantes deben estar completamente vacunados.
30. Todos los estudiantes y el personal elegibles deben vacunarse lo más antes posible, y se les requiere verificar su estado de vacunación. Se requiere que el personal que no está completamente vacunado sea examinado semanalmente. Los datos de la tasa de vacunación del personal y del estudiante (el porcentaje de personal y estudiantes que están completamente vacunados) deben publicarse y ser puestos en el sitio web de la escuela y actualizarse mensualmente. El estado de vacunación de los estudiantes individuales y del personal no se hará público.
31. Otras actividades juveniles relacionadas con la escuela (por ejemplo, transporte estudiantil, deportes, música, teatro, atención después de la escuela, etc.) seguirán la guía actualizada de CDPH y Salud Pública del Condado de Marin.

32. Un [Plan de Protección Específica al Sitio Escolar](#) (SSSPP) / Plan de Seguridad de COVID (CSP) que describe las medidas anteriores esta completa, publicada y actualizada en los sitios web de la escuela o del distrito como un componente y se comparte con todo el personal y las familias. Las escuelas deben actualizar los SSSPPs/CSPs como cambios de orientación de Salud Pública estatales y locales.

Documentos de recursos:

- [September 10, 2021 Public Health Update Interim Guidance for K-12 School and Youth Performing Arts, Sports and extracurricular activities](#)
- [July 12, 2021 CDPH COVID-19 Public Health Guidance for K-12 Schools in California, 2021-22 School Year](#)
- [July 12, 2021 CDPH K-12 school-based COVID-19 testing strategies for school year 2021-22](#)
- [July 9, 2021 CDC Guidance for COVID-19 Prevention in K-12 Schools](#)
- [July 20, 2021 What Parents Should Know About the Updated COVID-19 School Guidance](#)
- [June 22, 2021 Safely reopening California](#)
- [July 27, 2021 CDC Interim Public Health Recommendations for Fully Vaccinated People](#)
- [July 29, 2021 California Department of Public Health Vaccine Record Guidelines & Standards](#)
- [CDC K-12 Guidance on Disabilities or Other Health Care needs](#)
- [State of California Safe Schools For All Hub](#)
- [July 28, 2021 CDPH - Guidance of the the Use of Face Coverings](#)
- [June 15, 2021 CDC Cleaning and Disinfecting your Facility](#)
- [CDPH Indoor Air Quality](#)
- [June 30, 2021 CDPH Travel Guidance](#)
- [May 25, 2021 Marin County School Air Quality Activity Recommendations](#)
- [June 21, 2021 Cal/OSHA Prevention Emergency Temporary Standards - What Employers Need to Know About the June 18 Standards](#)
- [June 11, 2021 CDPH State Public Health Orders](#)
- [June 11, 2021 CDC How to Wear Masks](#)
- [CDC Symptoms of COVID-19](#)
- [California K-12 School Antigen Testing Program Playbook](#)
- [Marin County Schools Mitigation Strategies Continuum 2021-22 School Year](#)
- [Public Health References for Rethinking Schools Bibliography](#)